

**PRESENTATION TO BARKING AND DAGENHAM
HEALTH AND WELLBEING BOARD**

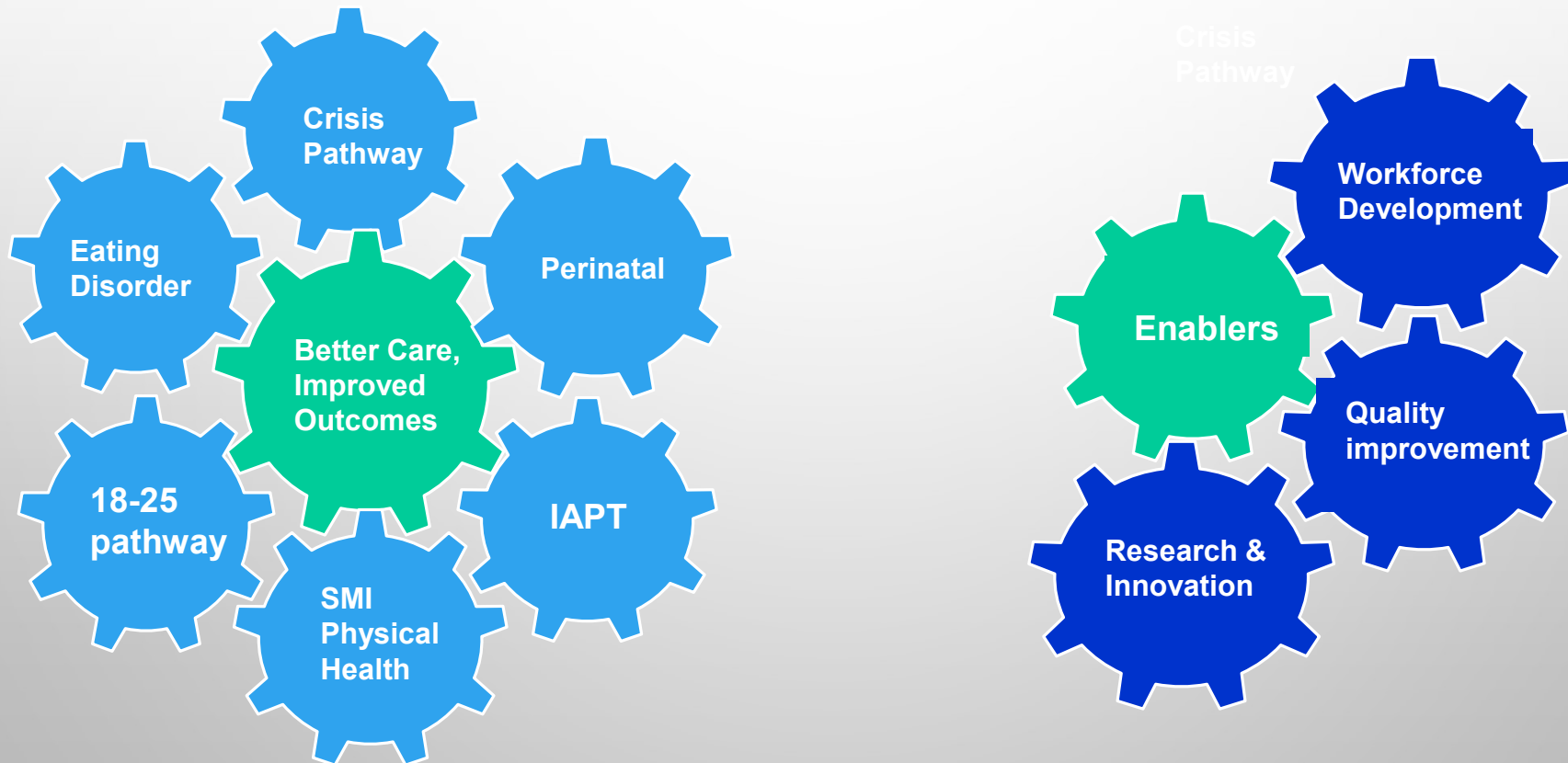
PROGRESS UPDATE:

ADULT MENTAL HEALTH TRANSFORMATION AND NHS LONG TERM PLAN

9 NOVEMBER 2021

LONG TERM PLAN (LTP) INVESTMENT AREAS COVERED BY THIS REPORT – B&D

Barking and Dagenham has developed a response to the Long Term Plan, setting out how partners (CCGs, providers, local authorities) will work together to provide high quality care and better health outcomes for our service users and their families. Our LTP investment for each service was agreed with the LTP’s objectives and they are:



MENTAL HEALTH INVESTMENT 2021- 2023/24 B & D

SERVICE LINES	21/22	22/23	23/24
	£000s	£000s	£000s
NELFT			
Physical Health checks for SMI - fye	£ 39	£-	£ -
IAPT - fye and new investment	£ 520	£ 179	£ 643
CYP Eating Disorders	£ 66	£ -	£ -
EIP	£ 113	£ 338	£ -
Crisis - CHRT and PD pick up	£ 240	£ -	£ -
MH Liaison - KGH & Queens pick up	£ 569	£ -	£ -
Comm SMI- secondary care psychology	£ 198	£ -	£ -
Perinatal	£ -	£ 298	£ 298
CAMHs - ASD - MHIS	£ 19	£ 137	£ -
CDU / S136 / Crisis hub - MHIS funding	£ 500	£ 64	£ -
TOTAL CCG FUNDING In NELFT	£ 2,265	£ 1,016	£ 941
Other CCG planned investment			
Ambulance support service	£ 81	£ 92	£ 120
CYPMH	£ 11	£ 213	£239
TOTAL	£ 92	£ 306	£ 359
TOTAL CCG PLAN	£ 2,357	£ 1,321	£1,300



SYSTEM DEVELOPMENT FUND (SDF) AND SPENDING REVIEW (SR) MENTAL HEALTH INVESTMENT 2021/22 B & D

SPENDING TYPE	NELFT SERVICE LINE	21/22
		£000s
SYSTEM DEVELOPMENT FUND	CHILDREN & YOUNG PEOPLE (CYP) community and crisis	£ 393
SYSTEM DEVELOPMENT FUND	18-25 young adults (18-25)	£ 79
SYSTEM DEVELOPMENT FUND	Perinatal - Maternal Mental Health Services (MMHS)	£ 109
SYSTEM DEVELOPMENT FUND	Adult Mental Health Crisis (AMH Crisis)	£ 126
SYSTEM DEVELOPMENT FUND	Adult Mental Health Community (AMH Community)	£ 673
SYSTEM DEVELOPMENT FUND	Suicide Prevention	£ 61
SYSTEM DEVELOPMENT FUND	Rough Sleeping 19/20 and 20/21 Sites	£ -
SYSTEM DEVELOPMENT FUND	COVID: Mental health support for staff hubs	£ 145
SYSTEM DEVELOPMENT FUND	MHST 21/22 sites wave 5&6	£ 631
SYSTEM DEVELOPMENT FUND	Rough Sleeping 21/22 Sites	£ -
Spending Review	Children & Young People's Eating Disorders (CYPED)	£ 70
Spending Review	CYP community and crisis	£ 264
Spending Review	Discharge (Adults)	£ 342
Spending Review	Adult Mental Health Community (AMH Community)	£ 228
Spending Review	SR: Adult Mental Health Crisis (AMH Crisis)	£ 51
Spending Review	Improving Access to Psychological Therapies - adult and older adult (IAPT)	£ 126
Spending Review	SR: 18-25 young adults (18-25)	£ 51
Spending Review	Memory assessment services and recovery of the dementia diagnosis rate (Memory/Dementia)	£ 30
Spending Review	Physical health outreach and remote delivery of checks (PH Checks)	£ 47
Spending Review	Discharge - Additional Split TBC	£ 147
TOTAL		£ 3,575



COMMUNITY MENTAL HEALTH TRANSFORMATION PROGRAMME

Key objective: To develop an integrated adult mental health model with an evidence-based skills development programme to build long term resilience

Key principles:

Co produced with service users and carers

- Increased access to psychological therapy and recovery interventions
- Promotes continuity of care and reduces hand offs between teams
- Develops a primary care supported model based around locality PCNs with co-production with primary care
- Develops a new workforce using apprentices, people with lived experience and develops existing workforce to adapt to new ways of working
- Develops community mental health resilience and support through working with and supporting third sector partners



ADULT COMMUNITY MENTAL HEALTH TRANSFORMATION KEY ACHIEVEMENTS AND PRIORITY NEXT STEPS

CMHT key achievements

- Model of care and interfaces agreed e.g. with older adults service
- B&D locality steering group formed – membership includes LA, VSO, Service users
- Staff consultation in progress
- Open dialogue training commenced
- Training matrix in place
- ARRS workers appointed
- Contracts developed with 3rd sector for peer support worker service

Priority next steps

- Readiness for go live
- Address service pressure impacts on plans
- Co-production of systems and process
- Complete recruitment
- Develop communication and engagement plan
- Staff training



CRISIS PATHWAY UPDATE

Case for Change

- Crisis pathway with high unsustainable demand
- Patients not receiving treatment at home, at times needing to travel far from home to get inpatient care
- Use of private beds costing in surplus of £0.5M / month
- Impact on staff wellbeing, recruitment and retention
- A whole system review was necessary to develop a more robust, responsive and less restrictive MH crisis pathway

Change Implemented

- Clinical Decision Unit (CDU) opened in November 2020 to manage Covid-19 and triage all admissions to determine whether further treatment is required
- CDU is a 7 day / week admission and discharge unit, offering medical cover throughout
- Integrated Crisis Assessment Hub (ICAH) – enhanced model which includes outreach to all localities working closely with community mental health teams as well as Diversion pathway introduced to avoid emergency hospital presentations where this is not needed

CRISIS PATHWAY: OUTCOMES AND IMPROVEMENTS

- Hospital beds closer to home and improved support network
- Time in hospital decreased, promoting the least restrictive option
- Reduced costs on out of area beds (nil use of private beds since November 2020)
- 80% positive patient experience reported at the Integrated Crisis Assessment hub
- Improved joint working with London Ambulance Service and the Police, offering an alternate pathway to ED and quicker response and handover

SERVICE OFFER FOR 18-25 YEAR OLD AGE GROUP PATHWAY UPDATE

- New local research/scoping on the needs of this age group – not just about getting transition right but more than this
- Commissioned 'At Scale' – external organisation to undertake by end January 2022
- Special consideration of high risk groups, where we know the incidence of mental health issues is greater:
 - Care leavers/Children in care
 - Those on edge of youth justice services
 - Those with special education needs
 - Young carers and children separated from their families (UASC)

Perinatal

- NELFT have commenced the recruitment process for additional staff to achieve 21/22 objective. However, recruitment challenges currently put the LTP target for this service at risk
- The Perinatal team continue to progress with recruitment. New staff are undergoing induction and training to support the service

Eating Disorders

- The service has recruited about 80% of additionally funded staff and continues to deliver services to meet the LTP trajectory

IAPT

- The NHSE system maturity analysis tool has recently placed B&D among the two highest performing services for IAPT within 7 IAPT services across NEL ICS

STAFF HEALTH AND WELLBEING HUB UPDATE NEL

KeepingWellNEL.nhs.uk



Talk to us LIVE via chat, voice or video call – from your browser

Kindly provided by Qualified NHS Wellbeing professionals for all care professional working in health and social care in NEL.

Open 8:00AM – 8:00PM, Monday to Saturday.

Talk to us NOW or tell your colleague in need:

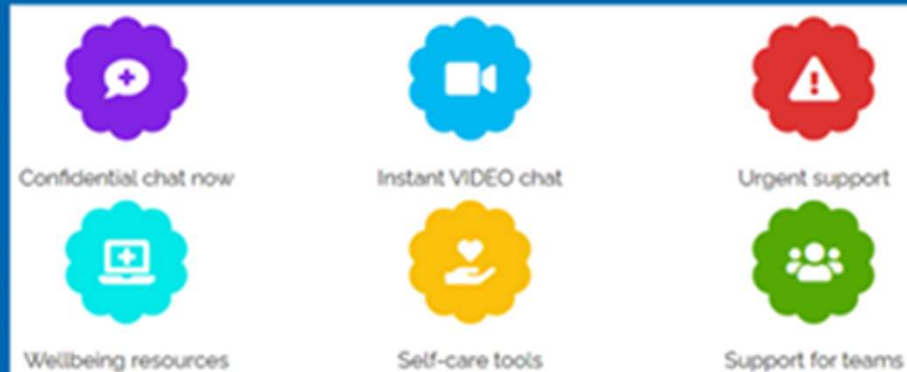
Live chat: www.KeepingWellNEL.nhs.uk

SMS: 0772 348 4839

Email: keepingwell.nel@nhs.net

Talk to us LIVE via chat, voice or video call – from your device

We have grown and expanded the NELFT Emotional Chat Support into a comprehensive 360° Wellbeing and Resilience Hub, we are here to provide a listening ear, 100% confidential. We are also able to identify those with urgent emotional wellbeing needs and we will support you with fast-tracking to existing NHS Mental Health Services, or Signposting to the most appropriate team. We can offer a quick 360 degrees wellbeing needs review and emotional wellbeing screening support to any health and social care professionals working in NEL



Free resources and webinars



Visit our website
← Scan here

Mindfulness

Staff Practical Support

STAFF EMOTIONAL SUPP...

Emotional Wellbeing

Webinars

Thank you
to our amazing NHS staff
#thankyouNHS

NHS Staff discounts

Self-Help/ Self-Manageme...

Bereavement Support

REDEPLOYMENT GUIDAN...

